



**POTTERS
GUILD
of BRITISH
COLUMBIA**

NEWSLETTER

bc potters

February 2005

Volume 41 No. 2

Lilach Lotan **BOTTLED**

The February show in the Gallery of BC Ceramics

Our everyday life is a compound of private, social and political events. Some are insignificant; some are hard to shake off, leaving a deep mark. Consciously and subconsciously I drew my inspiration from those events and channeled them into this series of works. I chose to carry the same bottle shape throughout the series, using it as a motif and metaphor, stretching it in every direction imaginable. Each bottle tells a story...my personal representation of relationships, dreams, hopes, struggle, balance and harmony.

My work is my way to connect with the world. I've always had trouble expressing myself with words. My language is clay. I create words on the potter's-wheel, and then combine and shape my sentences by hand.

Growing up, I liked spending time in my own micro-magical world of Lego toys, train sets and assembly kits. As I'm trying to find "my voice" as an

artist, I cannot ignore that early influence. Rarely do I throw a vessel all in one piece. I constantly play Lego, but now, I get to create my own units.

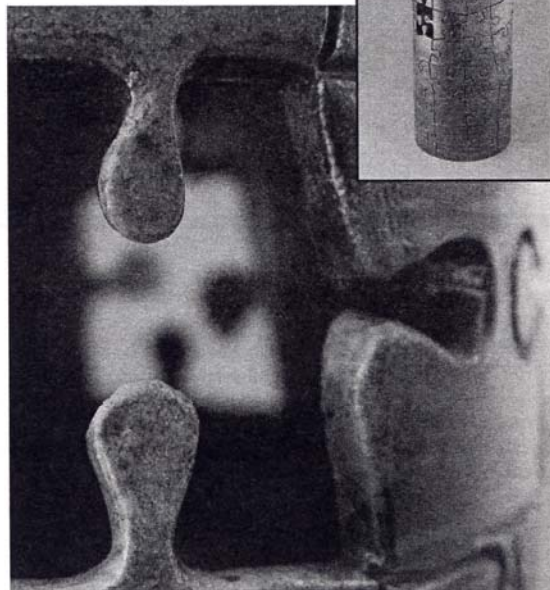
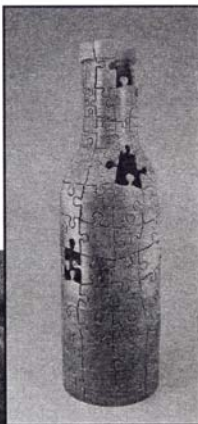
As much as I like being in control of the making process, at some point the piece gets a life of its own. It's being born instead of being made. Of course I put my "genes" into it, but then nature does its magic. It's refreshing to let my guard down when it comes to the firing. In wood firing I use almost no glazes. Everything is left up to heat, ash and mostly chance. If it works, there is nothing like it! You can never imitate chance!

When firing in an electric kiln I chose to incorporate wood ash as a primary ingredient in my glazes, because its effect is somewhat unpredictable. It "shuffles my cards". I never know what I'm going to get. Each kiln opening is a surprise!

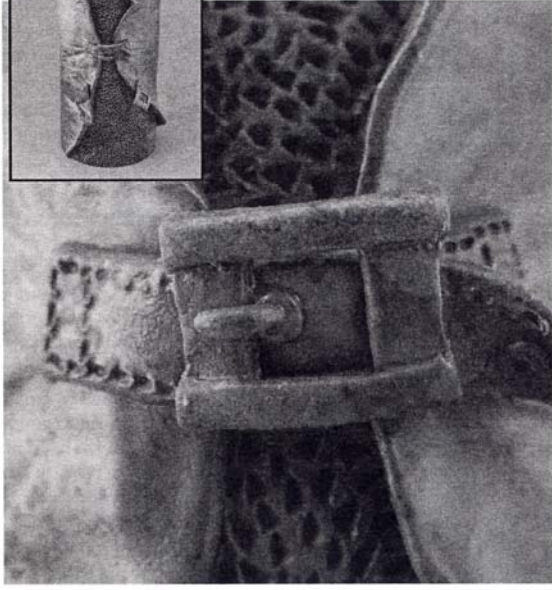
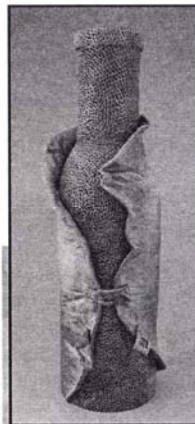
Lilach Lotan

Photos courtesy Lilach Lotan

Puzzle (right) and detail (below).



Nomad (left) and detail (below)



February 3rd - 28th

Lilach Lotan, "Bottled"

March 3rd - April 4th

"The Potter and Apprentices"

Vincent Massey

April 7th - May 2nd

Jasna Sokolovic

May 5th - 30th

"A Tisket, A Tasket"

Linda Doherty

June 2nd - 28th

"Ceramicycle"

Jim Stamper

June 30th - August 2nd

"Kootenay Collective"

Julia Gillmor, Katherine Hofmann, Neil McBriar

August 4th - 29th

Mary Fox

September 1st - October 3rd

"Separate Skins"

Keith Rice-Jones

October 6th - 31st

"Panorama"

Nancy Walker

November 3rd - 28th

"Objects of the Heart"

Debra Sloan

December 1st - 31st

Members' Show
